

Your pathway through lung cancer care

Specialist appointment

You will be referred to a respiratory specialist within a hospital or cancer centre, who ideally is part of a lung cancer multidisciplinary team. Your specialist will organise for you to have further tests to confirm your lung cancer diagnosis. An accurate diagnosis can take up to two weeks.

Diagnosis and staging

If lung cancer is confirmed, your specialist may organise further tests to identify the type of lung cancer and its stage (that is, the size of the tumour and whether it has spread). These tests may include imaging (such as CT or PET scans, or ultrasound), and molecular or genetic testing of the tumour. It can take up to two weeks to diagnose and stage your specific lung cancer, which will help identify your treatment options.

If you smoke, talk to your doctor about quitting. Treatment for lung cancer is more effective in people who don't smoke.

Multidisciplinary team care

You will be cared for by a range of healthcare professionals who are part of a multidisciplinary team (MDT, also called multidisciplinary care). Each of these health professionals specialises in a different aspect of your lung cancer care. Members of a lung cancer MDT meet to discuss and assess the diagnosis and staging results to make recommendations about the best treatment and care options available to you. Your specialist will discuss your treatment options with you.

Treatment and monitoring

Depending on your lung cancer type and stage, your treatment options will vary. A range of options may be suitable to treat your cancer and/or manage your symptoms, and treatments can be given alone, one after another, or together in combination. Your specialist will monitor you closely during treatment to ensure the treatments are working for you, manage any side effects, and take action if the cancer progresses or spreads to other parts of your body.

Immunotherapy
to treat the cancer using a drug that targets the body's own immune system

Chemotherapy
to treat the cancer using medicines

Radiotherapy
to treat the cancer using radiation

Surgery
to remove the tumour

Clinical trials
to research new ways to treat lung cancer and improve patients' health

Targeted therapies
to treat the cancer using medicines that target specific molecular pathways

Supportive and palliative care to help manage your symptoms, support your psychosocial and emotional wellbeing, improve your quality of life and transition to end-of-life care if required

Follow-up

Once your treatment is over, it is important that you receive regular follow-up care. Your specialist will prepare a plan that outlines the tests you need to have and when you need to have them, and a plan for managing any late effects of treatment. This follow-up care may be provided by your specialist, local hospital or GP.

Survivorship

The good news is the survival rate for people with lung cancer has increased over recent years. Many people continue to live healthy lives after their curative treatment. Life after cancer treatment can present its own challenges, and you may need some time to adjust.

Disease recurrence

Your routine follow-up tests, other tests or new symptoms might indicate that the cancer has come back. If this happens, you will be referred back to your original specialist, if possible, who will determine whether the cancer has come back or whether it is a new cancer. Your specialist will discuss a new treatment plan depending on the type of cancer, whether it has spread, your previous treatment and your wishes.



LUNG FOUNDATION
AUSTRALIA

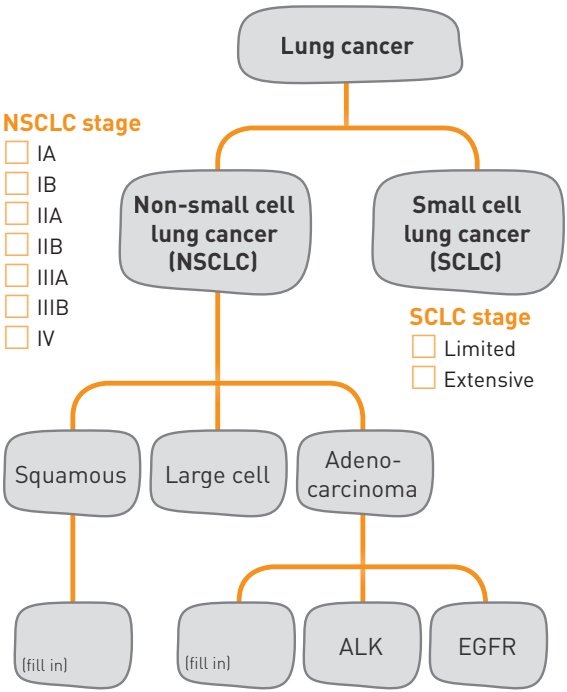
"When you can't breathe... nothing else matters"

Visit the **Lung Foundation website** for further details on each of the stones in the pathway.

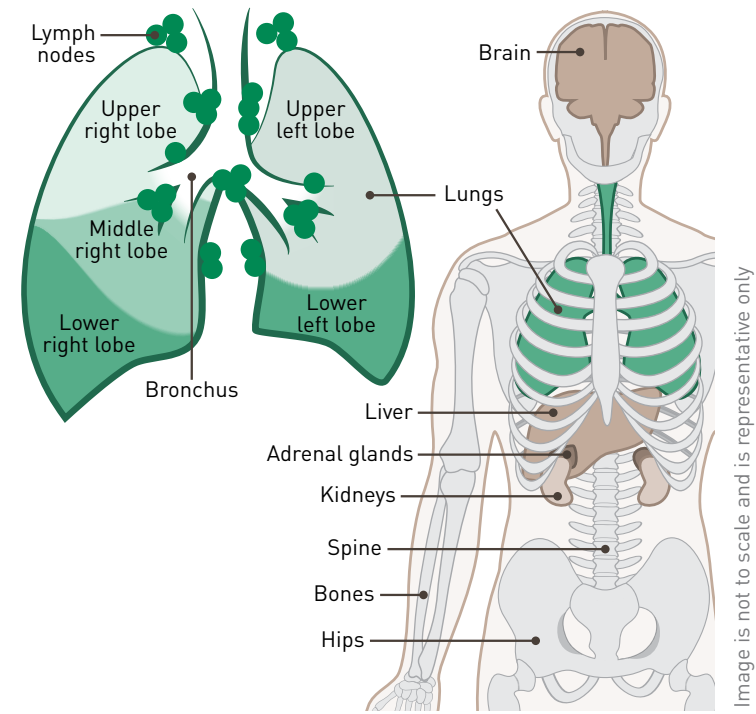
Your lung cancer profile

This lung cancer profile can help in your discussions with your doctor about your lung cancer type, stage, location and treatment.

Lung cancer type and stage



Lung cancer location



Recommended treatments

Type	Details (eg doctor, date)
<input type="checkbox"/> Surgery	
<input type="checkbox"/> Radiotherapy	
<input type="checkbox"/> Chemotherapy	
<input type="checkbox"/> Targeted therapy	
<input type="checkbox"/> Immunotherapy	
<input type="checkbox"/> Clinical trial	

Lung cancer Patient pathway

A guide to treatment and management pathways for people who have been diagnosed with lung cancer

Lung Cancer Network is Lung Foundation Australia's patient and carer program that offers lung cancer support services – telephone support groups, an online forum, links to lung cancer services and resources, and access to a specialist lung cancer nurse.

Visit our website:
lungcancernetwork.com.au
or free call **1800 654 301**.

 **LUNG FOUNDATION**
AUSTRALIA
lungfoundation.com.au
1800 654 301

This resource is made possible via unrestricted educational grants.
Principal Sponsor: Bristol-Myers Squibb
Supporting Sponsors: AstraZeneca, Boehringer Ingelheim, Pfizer, Maurice Blackburn Lawyers, MSD.